

*On the margins, marginal too?*  
A western outpost of the  
Paleolithic Cantabrian cave art  
(NW Iberia)

R. Fábregas Valcarce, A. de Lombra Hermida, M. García Díez,  
X.P. Rodríguez & R. Viñas

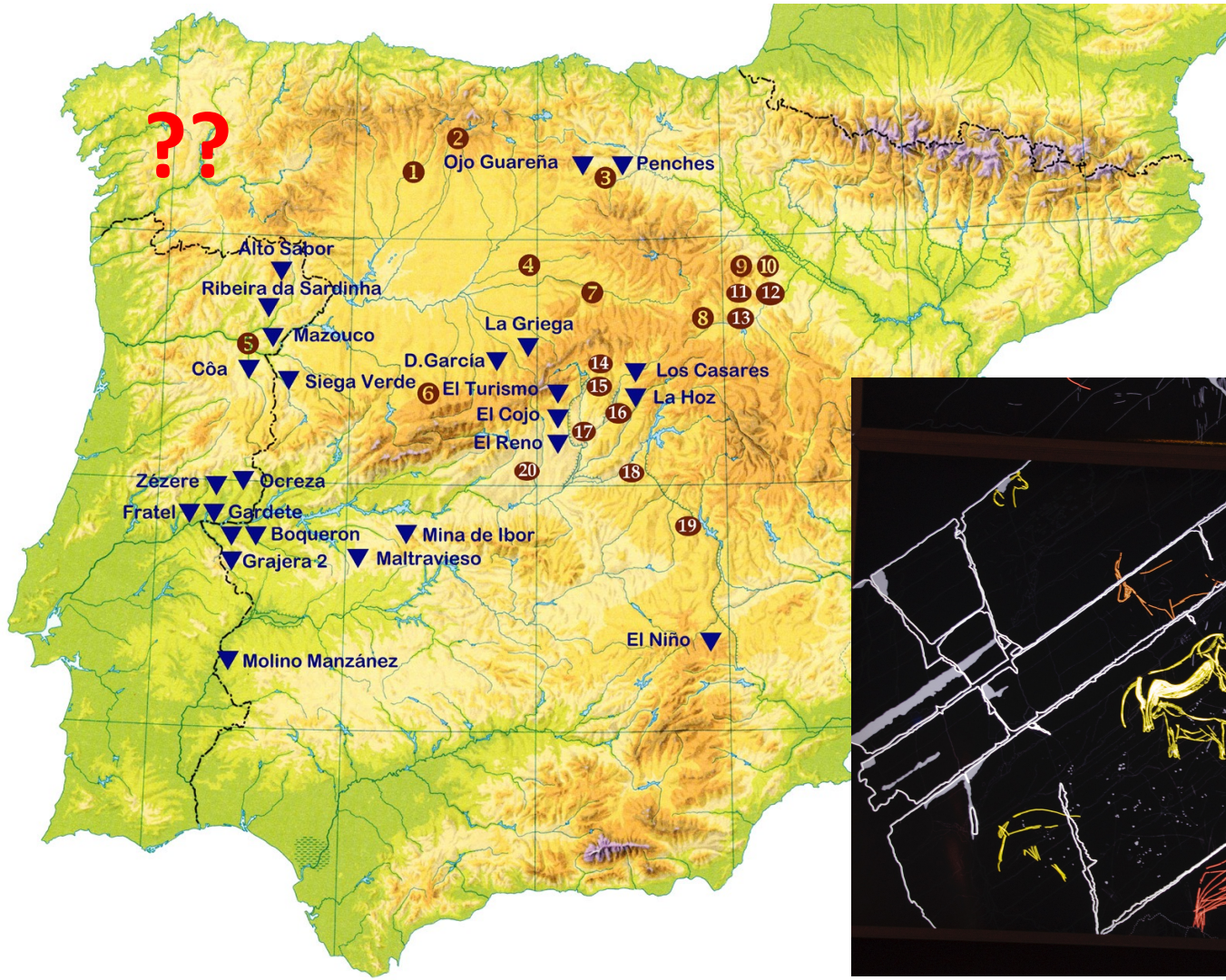




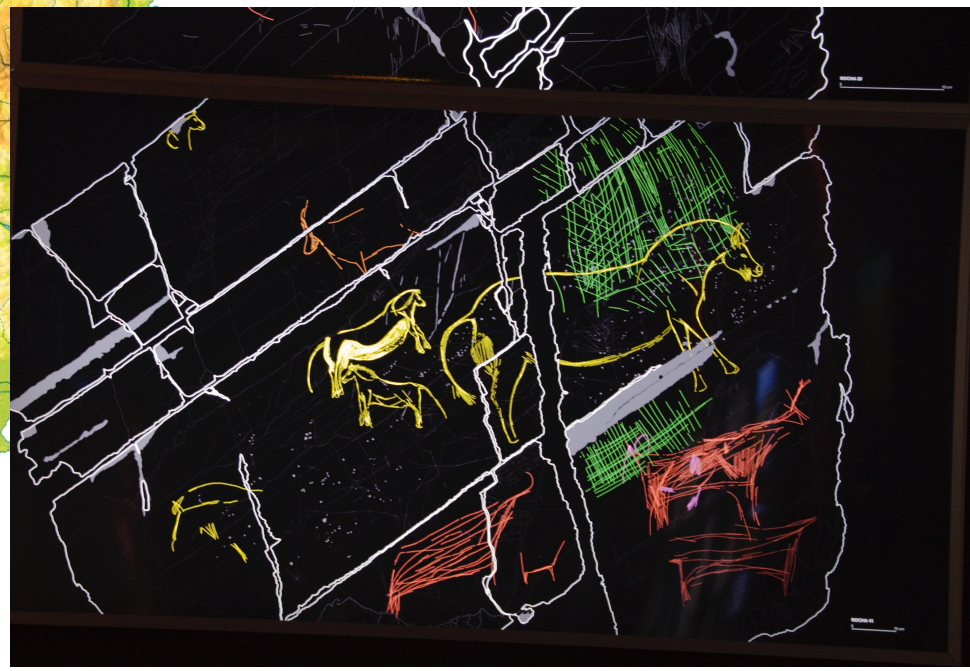
40-35 Ky ago: figurative art appears in W Europe





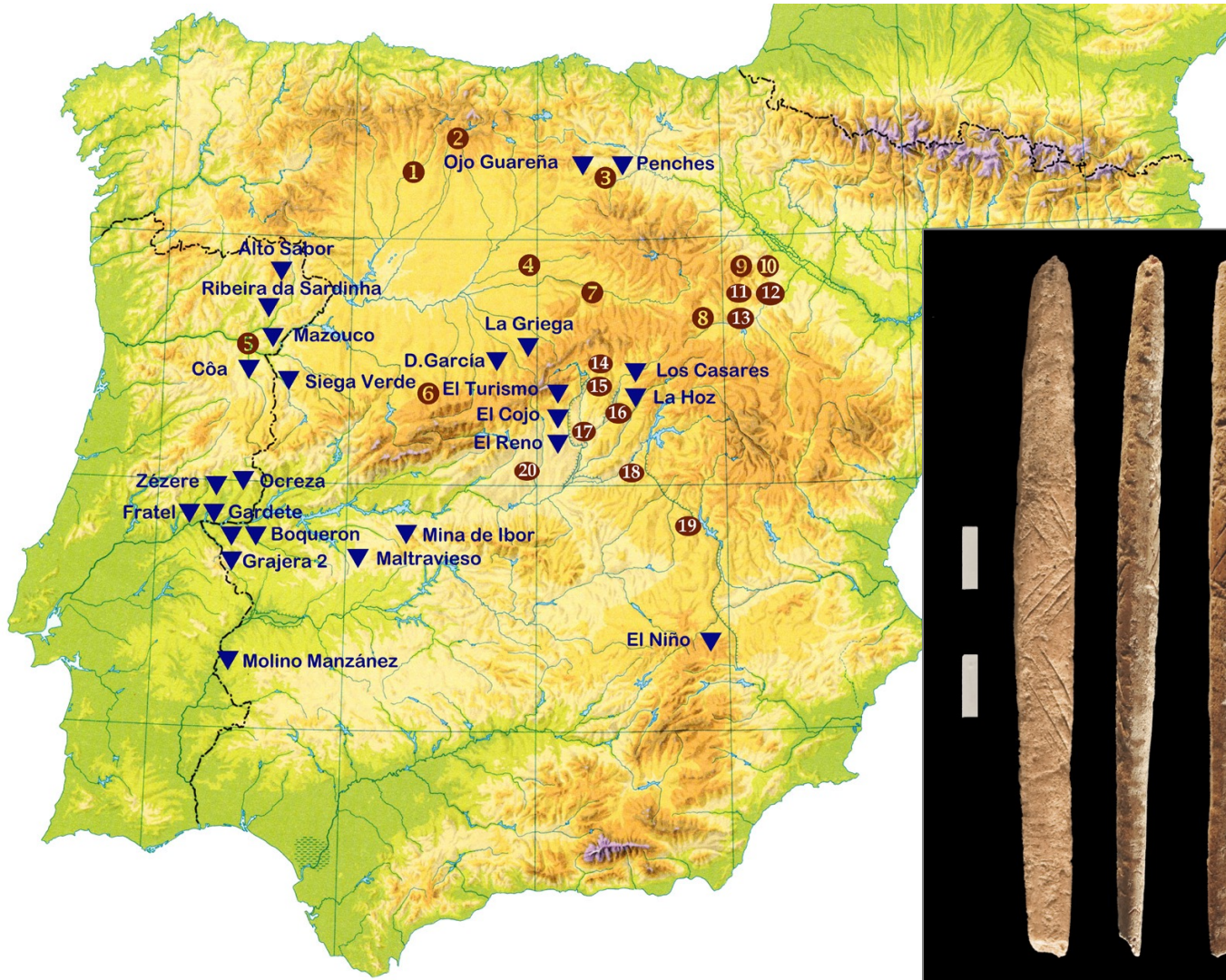


Still a blank in  
NW Iberia

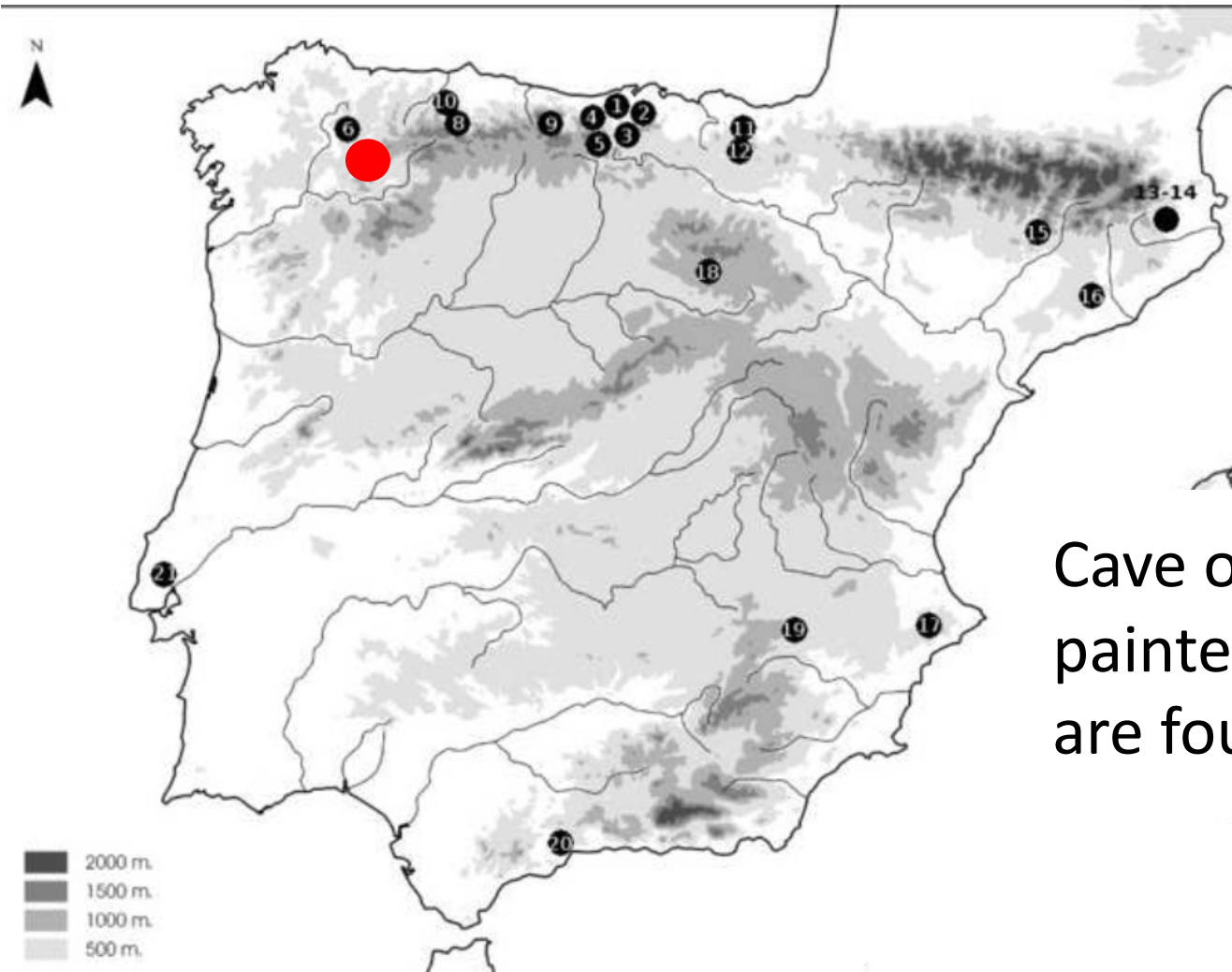




A bad case of iconoclasm?







Cave of Eirós 2011:  
painted/carved images  
are found



Panel III

Panel II

Panel I

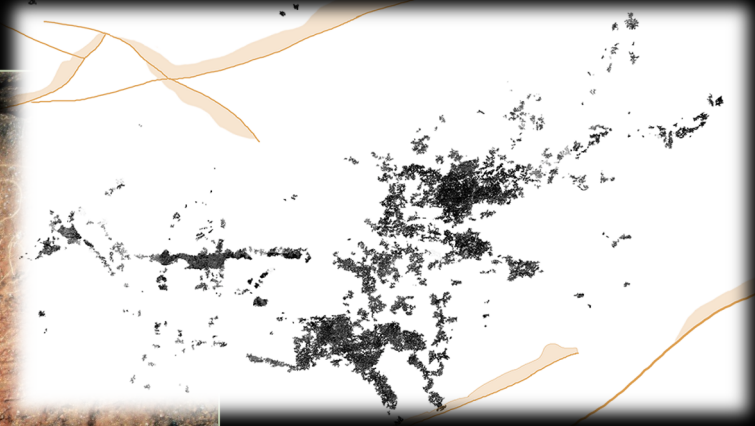








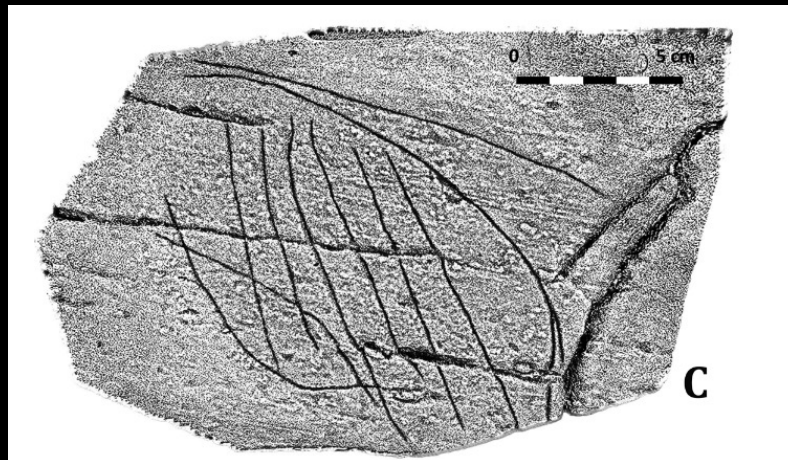
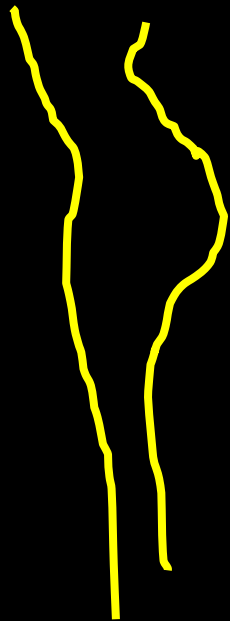
# Using D-STRETCH to enhance faded paints













Engraved motifs

Painted motifs

Bovids



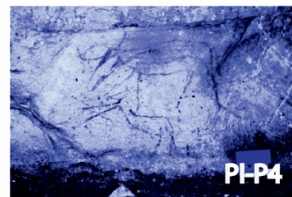
PIV-G3



PIV-G3



PI-P4



PI-P4



PXI-P2

Cervids

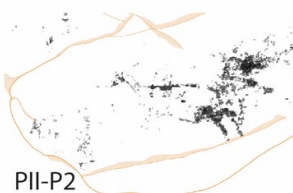


PIII-G1

PIII-G3



PI-P5

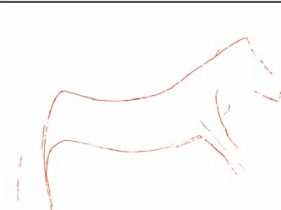


PII-P2



PII-P2

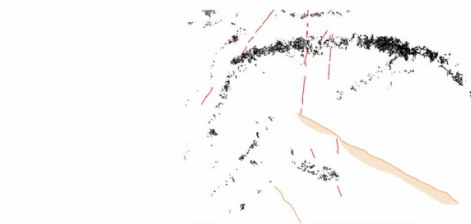
Equids



PXI-G2



PVIII-G7-13



PIII-P4



PIII-P4

Anthropomorphs



PIV-G14



PV-G1

Bears

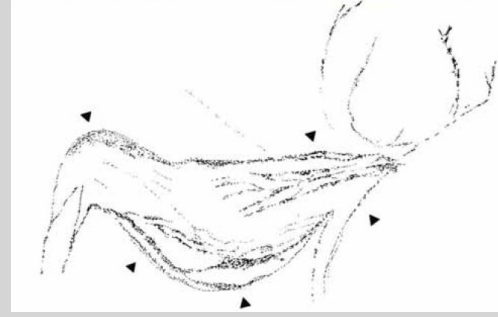


PIII-P1

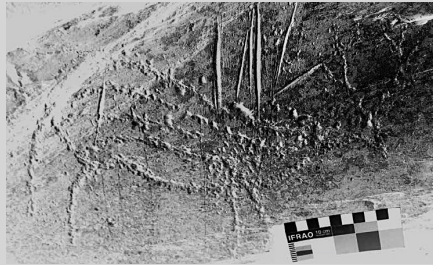




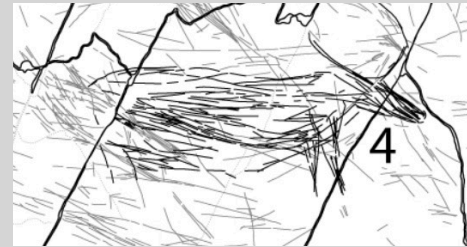
# Ojo Guareña



XII-X millennia cal BP for Eiros' art after stylistic comparisons and direct C-14 dates

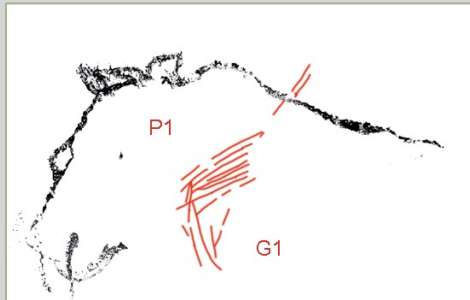


Passadoiro

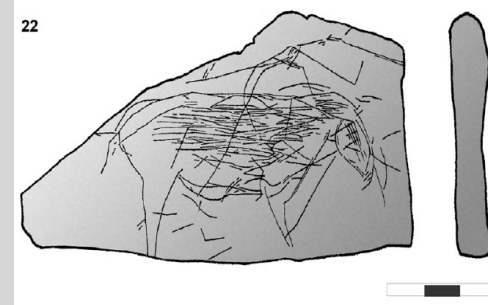


Penascosa 12

Siega Verde

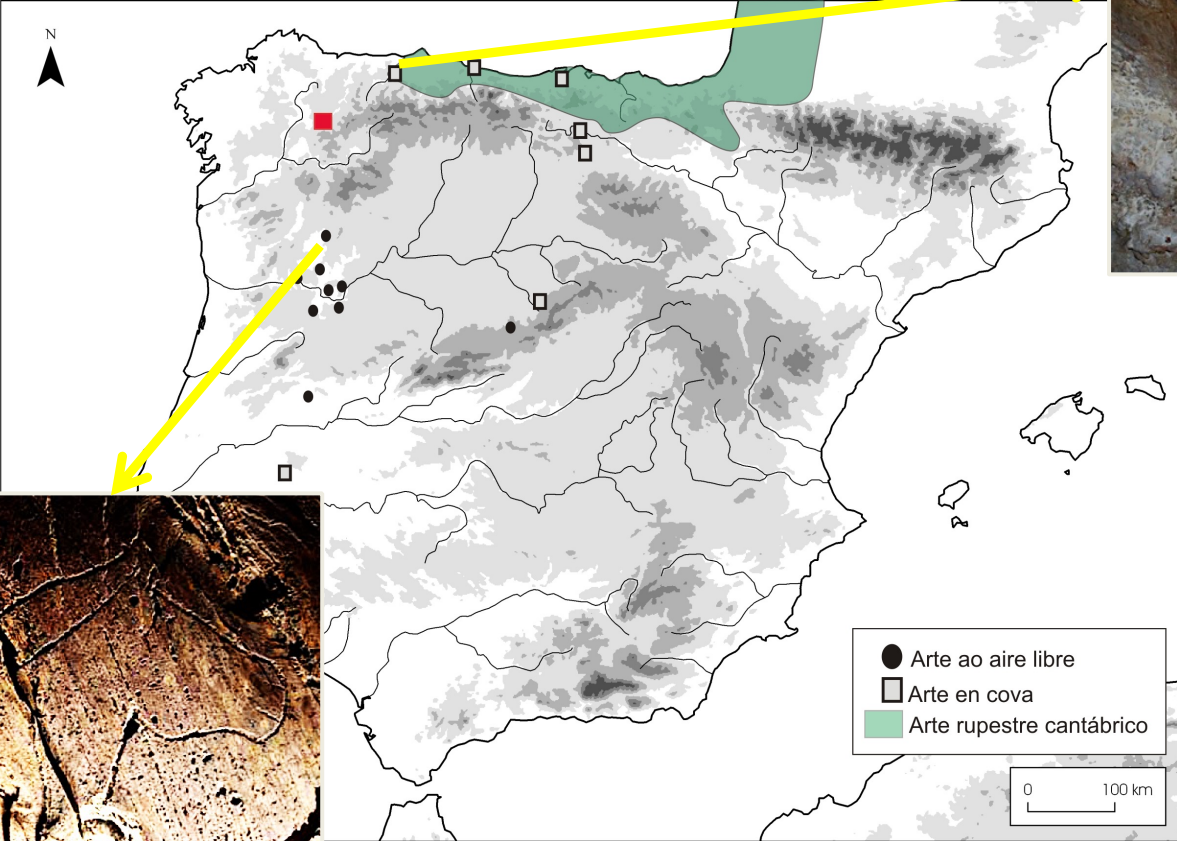


La Peña de Estebanvela



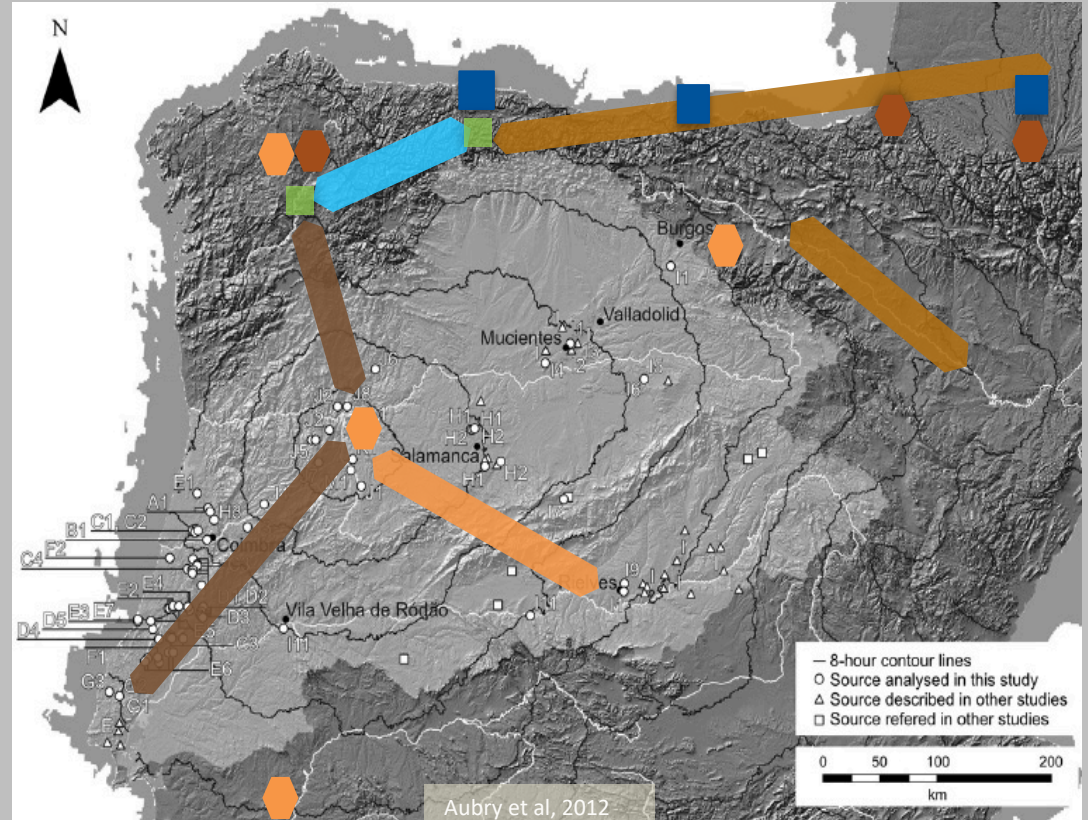


# Stepping stone rather than outpost

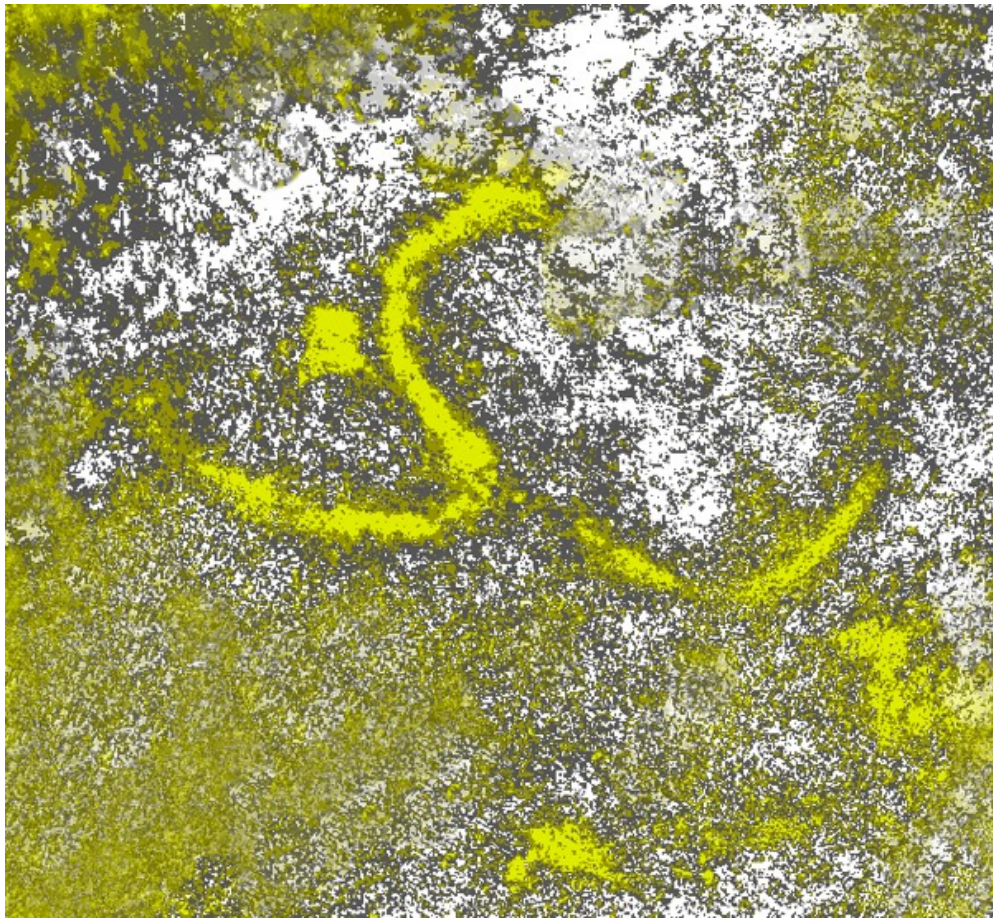




- Social territory across Western Iberia
- Sharing graphic conventions/raw materials
- Later stages of the Paleolithic







*THANK YOU*

